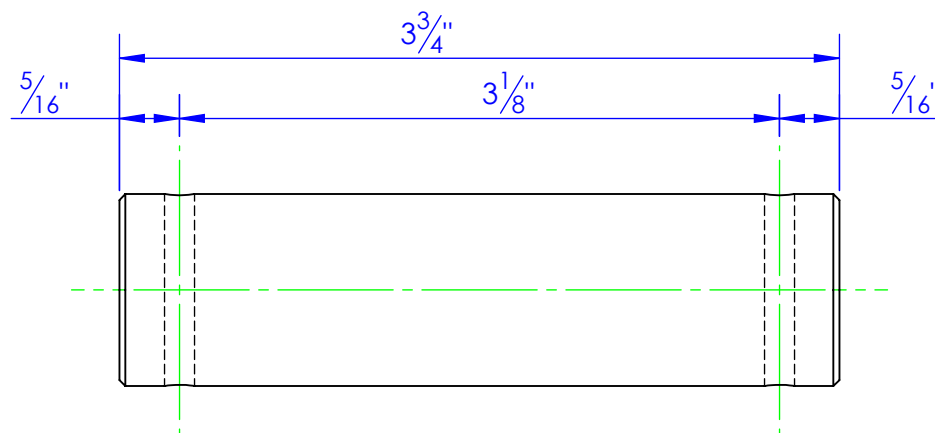
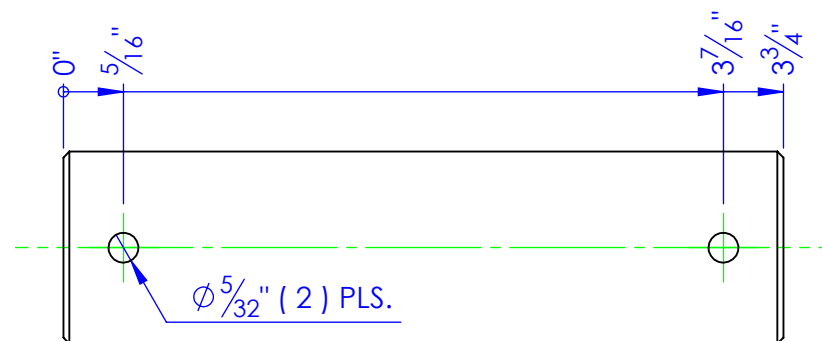
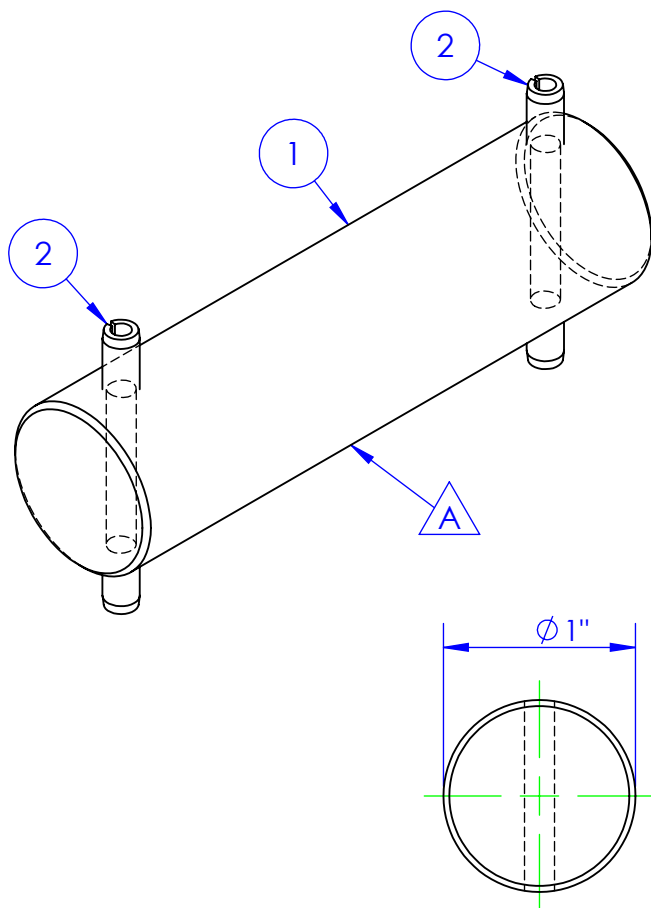


ITEM NO.	PART NUMBER	DESCRIPTION	Material	DRAWING #	QTY.
1	STC-CR 1x4142 L 3.75	PIN, CYLINDER MOUNT, HG.	CF ANN 4142 1RDx12	10-1711	1
2	HD-PE 3/16x1-3/4	EXPANPIN 3/16x1-3/4		STOCK	2

REV.	REVISIONS	DATE	APPROVED
A	DESCRIPTION INITIAL RELEASE FROM DWG # 50-2108 C	7/15/2013	



PROPRIETARY AND CONFIDENTIAL
THE INFORMATION CONTAINED IN THIS
DRAWING IS THE SOLE PROPERTY OF TRIPLE
C INC. ANY REPRODUCTION IN PART OR
AS A WHOLE WITHOUT THE WRITTEN
PERMISSION OF TRIPLE C INC. IS PROHIBITED.

DIMENSIONS ARE IN INCHES TOLERANCES: FRACTIONAL $\pm 1/16$ ANGULAR: MACH ± 1 BEND \pm TWO PLACE DECIMAL ± 010 THREE PLACE DECIMAL ± 005	
MATERIAL	--
DO NOT SCALE DRAWING	

NAME	DATE
DRAWN HEATH	7/18/2013
PART #	
ASM #	RE-PN-1x375
COMMENTS: PIN, CYLINDER MOUNT	

P.O. BOX 248, SABETHA, KS 66534	
TRIPLE C INC.	
SIZE A	DWG. NO. 10-1711
SCALE: 1:1	WEIGHT: 0.84
SHEET 1 OF 1	

REV.
A